



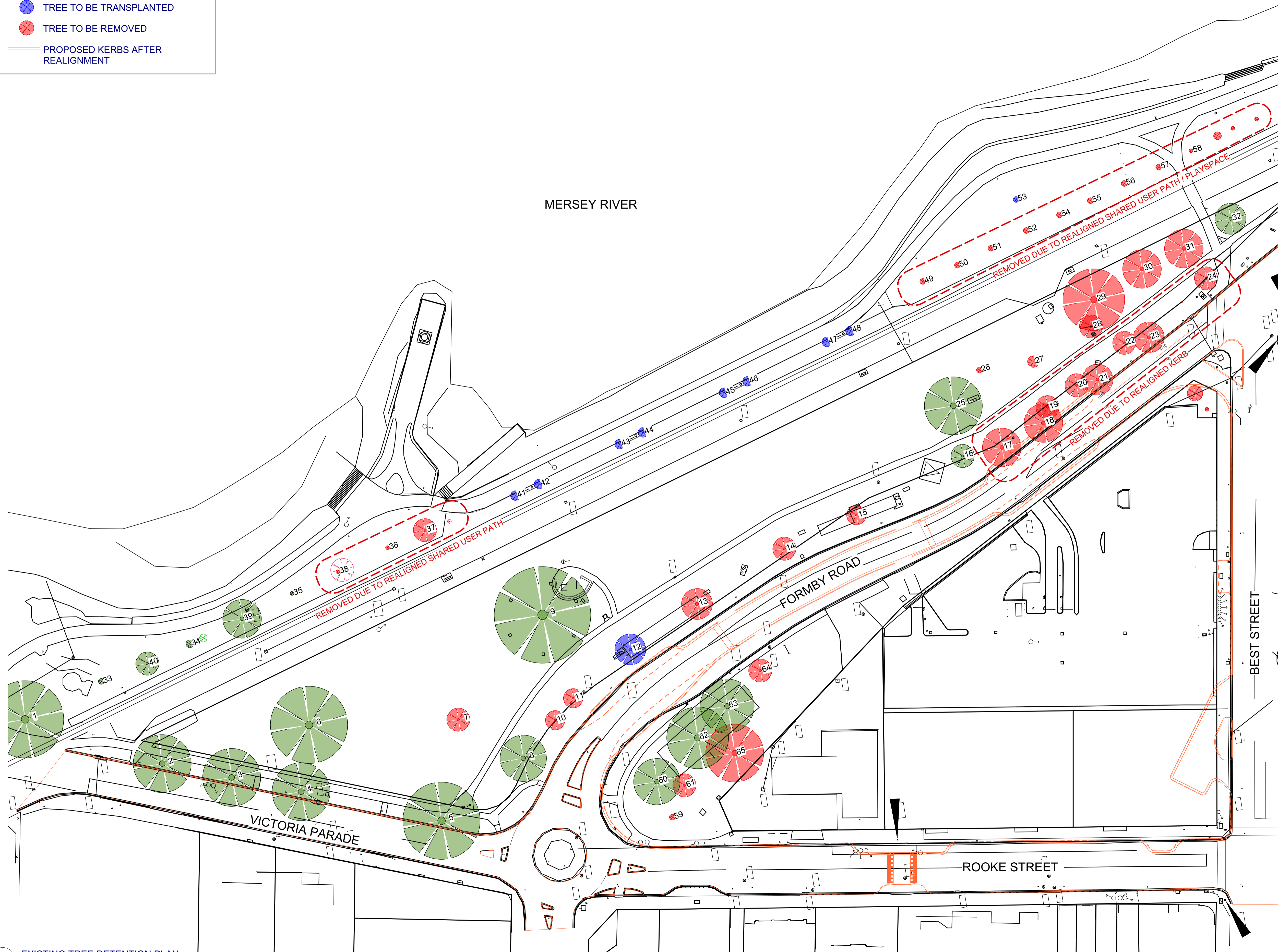


EXISTING TREE RETENTION LEGEND:

-  TREE TO BE RETAINED
-  TREE TO BE TRANSPLANTED
-  TREE TO BE REMOVED
-  PROPOSED KERBS AFTER REALIGNMENT



NOTES

These drawings shall be read in conjunction with all relevant information (not limited to legends, schedules, specifications)

These drawings shall be read in conjunction with any Engineers, Architects or other consultant information. (not limited to drawings, legends, schedules, specifications)

Check all dimensions and site conditions prior to commencement of any work and the procurement of any services, materials, fittings, fabrication or equipment.

Do not scale drawings – refer to figured drawings only. Any discrepancies shall immediately be referred to the Landscape Architect for clarification.

All drawings shall not be reproduced or distributed without prior permission of the Landscape Architect.

WARNING



Services shown on this drawing are approximate only. The exact location is to be confirmed on site by contractor prior to commencement of work.

DATE	REV	AMENDMENTS
17.06.2019	A	ISSUED FOR INFORMATION

PRINCIPAL
LYONS ARCHITECTS
 Level 3, 246 Bourke Street
 Melbourne
 VIC 3000
 T 03 9600 2818
 F 03 9600 2819
 E lyons@lyonsarch.com.au

CONSULTANTS
 6ty°
 57 Best Street
 Devonport
 TAS 7319
 T 03 6424 7161
 E admin@6ty.com.au

ASPECT Studios™
 ASPECT Studios Pty Ltd
 Level 4, 160 Queen Street
 Melbourne VIC 3066
 Australia
 T 03 9417 6844
 F 03 9417 6855
 www.aspect-studios.com
 aspectmelbourne@aspect-studios.com
 ABN 11 120 219 561

MELBOURNE

CLIENT
DEVONPORT CITY COUNCIL
 DEVONPORT, TASMANIA

PROJECT
 DEVONPORT WATERFRONT PARK

DRAWING
 EXISTING TREE RETENTION PLAN

DRAWN **CHECKED** **SCALE A1 | SCALE A3**
 - - 1:500 1:1000

STATUS
FOR INFORMATION
NOT FOR CONSTRUCTION

DRAWING NO. **REVISION**
 - A

1 EXISTING TREE RETENTION PLAN
 Scale: 1:500